



## Company Profile

---

*2023*

## Who We Are

We are passionate about developing and producing quality knitwear to deliver the very best product to support your success.

Texim is a business that has retained its core values throughout the expansion of the company. With our craftsmanship know-how, technology and production power, we are ranked as one of the top exporters in Turkey.

“YOUR *KNITWEAR*, OUR BUSINESS”



## Your Knitwear, Our Business.

We know knitwear, after all we have been making great products for more than 30 years.

- Leading global knitwear manufacturer since 1991.
- Competitive & Flexible privately owned manufacturing through vertical production.
- Comprehensive design, development & production.
- Strategic partnership with leading international brands & retailers.
- Strong raw material sourcing network.
- Commitment to investment in the latest technology.
- Fully-accredited via high social compliance standards.
- Versatile product portfolio.
- GOTS, Woolmark, RWS certified.



## Our Future Business Vision

"to be the preferred partner for premium brand customers and be recognized as the role model for business excellence in this sector"



## Texim Today

### Production Power:

- 2,5 Million Premium Quality Knitwear per Year
- Vertically Integrated Facility
- 280 STOLL latest model knitting machines
- SAP ERP based production monitoring
- Very Strong Raw Material Buying Power

### Staff:

- >1.400 in total,
- Average age: 38 years
- Average experience: 8 years
- 70% women,
- 42 engineers,
- 12 managers





Samsun Factory, June 2023

# Global Client Portfolio

**BOSS**  
HUGO BOSS

RALPH  LAUREN

GANT

Marc O'Polo

*Massimo Dutti*

BANANA REPUBLIC

ARMEDANGELS

# What We Offer to You?

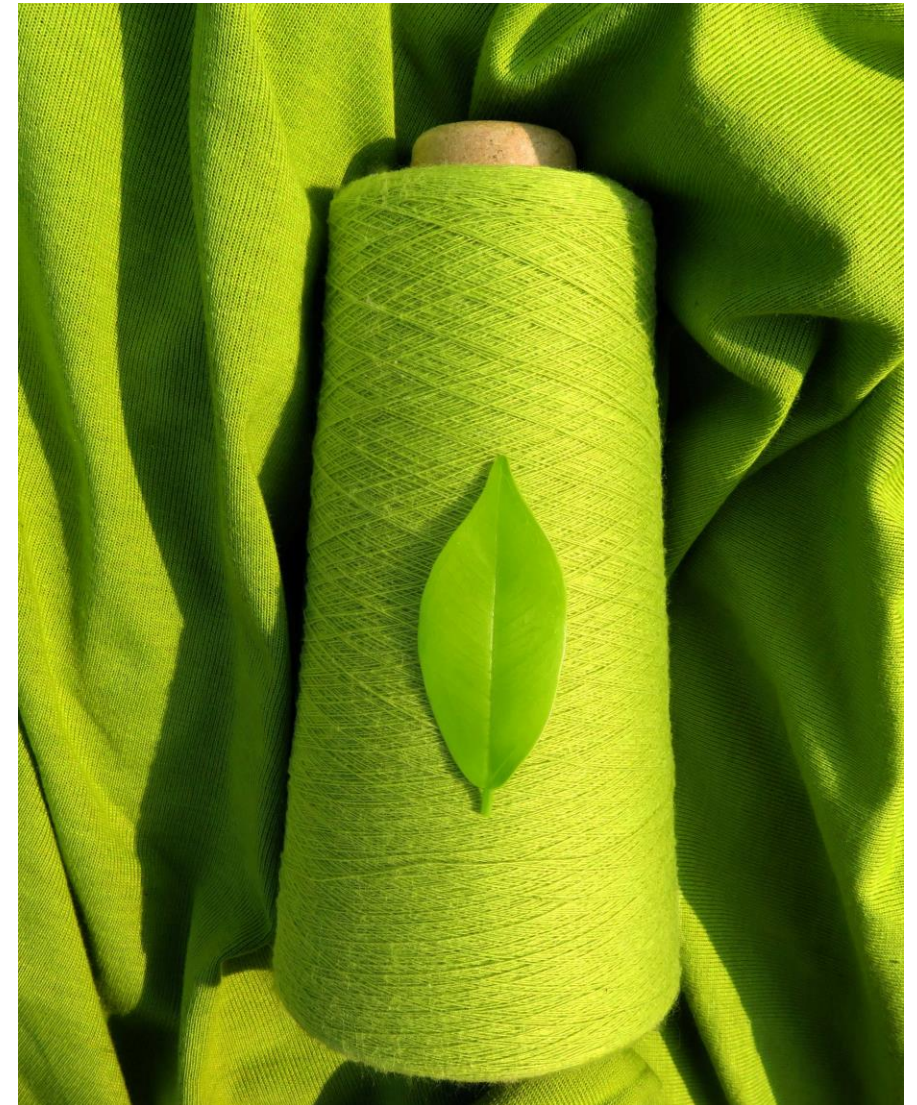
Today, global brands are wholly involved in entire supply chain process.

Parallel to this, we offer the following key success points to contribute to your success:

➤ **Solid Supply Base**

In addition to geographic advantages, our vertically integrated facilities, advanced infrastructure and skilled workforce are key assets of our production power.

*Working with us provides you with a strong and dependable production base close to your homeland.*





# What We Offer to You?

## ➤ **Technology for Production Efficiency**

We reduce product delivery times with our SAP based production planning tools, 3D development capabilities and lean optimized production processes.

*Working with us provides you with an agile and future mindset partner.*

## ➤ **Social Sustainability**

We have pioneer social compliance standards and leading position in this area.

*Working with us provides you with transparent monitoring on where your goods are manufactured and secures your brand's reputational risk.*

## ➤ **Environmental Sustainability**

We are cooperating with our customers to develop sustainable products by consuming lesser and emitting lesser.

*Working with us provides you with high environmental scores for your business.*



# What We Offer to You?

## ➤ **Quality**

We have high standards, established quality monitoring systems and trained personelled to ensure sustainable quality outcome.

*Working with us provides you with products manufactured parallel to your company's quality needs and secures your brand's reputational risk.*

## ➤ **Comprehensive Service**

We have know-how and experience in handling entire supply chain, including R&D support, yarn sourcing, 3D modeling, digital tools (Pivot88, SAP, PLM, Nexus, etc.), sustainability portals (HIGG, SLCP, etc.)

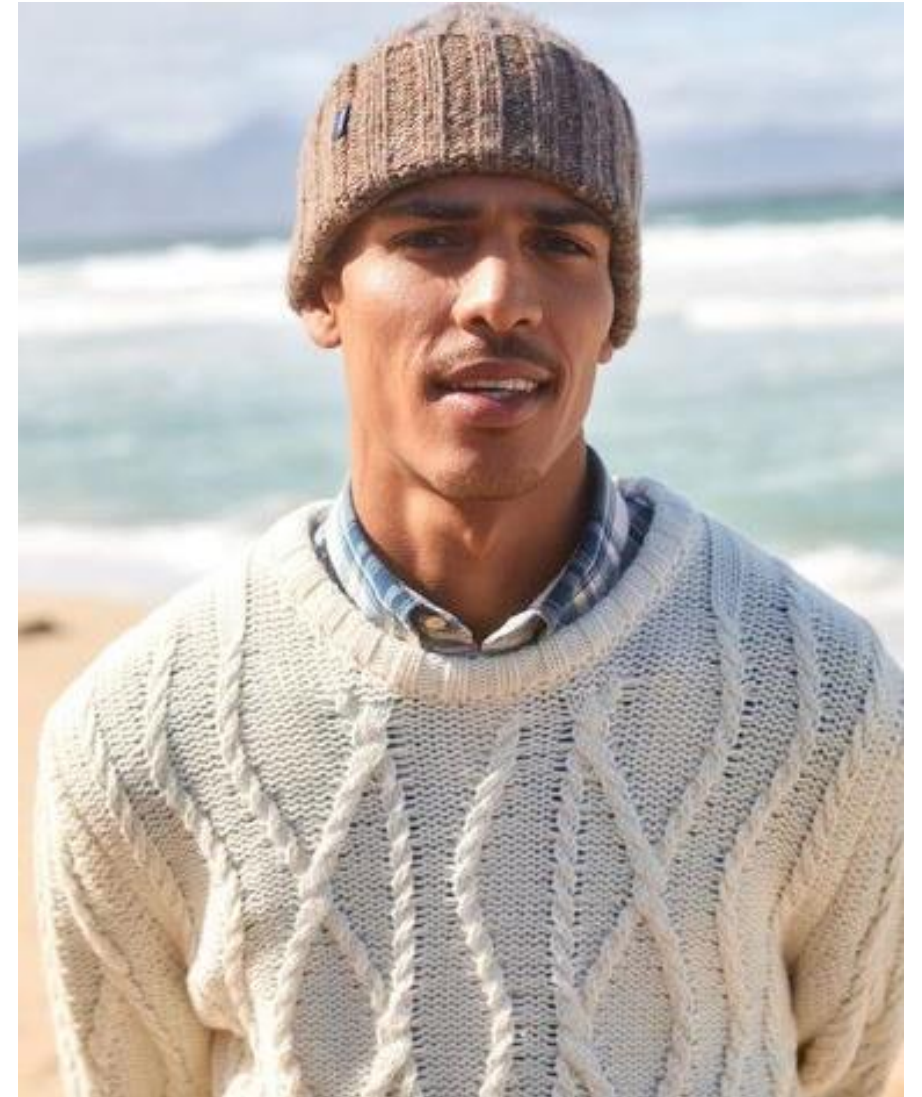
*Working with us provides you with processes parallel to your company's operation needs and lets your teams work efficiently.*



## "MADE IN TÜRKİYE"

Türkiye is the optimum mix of all the key parameters in the knitwear industry: Quality, flexibility, competitiveness and speed. Within all the knitwear supplying countries today, Türkiye alone offers a perfect balance of all the above criteria.

Türkiye is also at the very centre of all major buying and sourcing areas of the Eurasia zone, whilst enjoying Turkish & international raw materials at competitive prices.



## Sustainability Strategy

The textile & fashion industries have a huge socio-economic impact.

With this in mind, we set our Mission for a Sustainable Future ;

- Collaborate with our partners to achieve their goals on sustainability,
- Maintain our pioneer position on fair working conditions and environmental standards,
- Ensure all raw materials used are produced by eco-friendly techniques,
- Adapt new waste management systems to reduce environmental impact of production,
- Ensure women labour is strengthened.



## OPEX Achievements

- Business Model Based On Sustainable Operational Excellence
- ISO 9001, 14001, 45001 certificates
- BSCI A grade
- HIGG Index Score 85
- SLCP Score 89
- OEKO-TEX® STeP



## Raw Materials

- Strong, international raw material procurement network
- Extra-fine Merino Wool – The largest importer into Turkey
- Lambswool & Wool Blends
- Compact Cottons
- Premium Cottons (Giza, Pima, Mercerized)
- Cashmere & blends
- Linen Blends
- Mixed Blends
- All type of Organic fibers



## Certificates



STeP  
22002253  
OETI Turkey



CU 874762



CU 1015471



CU 1015471



CU 1015471

LENZING  
EcoVero™



FSC  
www.fsc.org  
FSC® C16666

We have Woolmark, GOTS, Organic, Ecovero, GRS, FSC and OEKO-TEX® STeP certificates as a factory. This allows us to produce certificated products to client upon demand.

# Samsun Factory, June 2023



- Social Compound
- Knitting 1
- Knitting 2 & Logistics Building
- Confection & Finishing Plants
- Washing/ Embroidery Plants
- Administration



# Knitting Plant



280 STOLL Machines

# Knitting Plant



# Knitting Plant



# Knitting Plant



# Knitting Plant



Pattern Making



SAP Based ERP

# Washing Plant



Washing

# Conditioning



Yarn Coning



Stream Conveyors

# Confection Plant

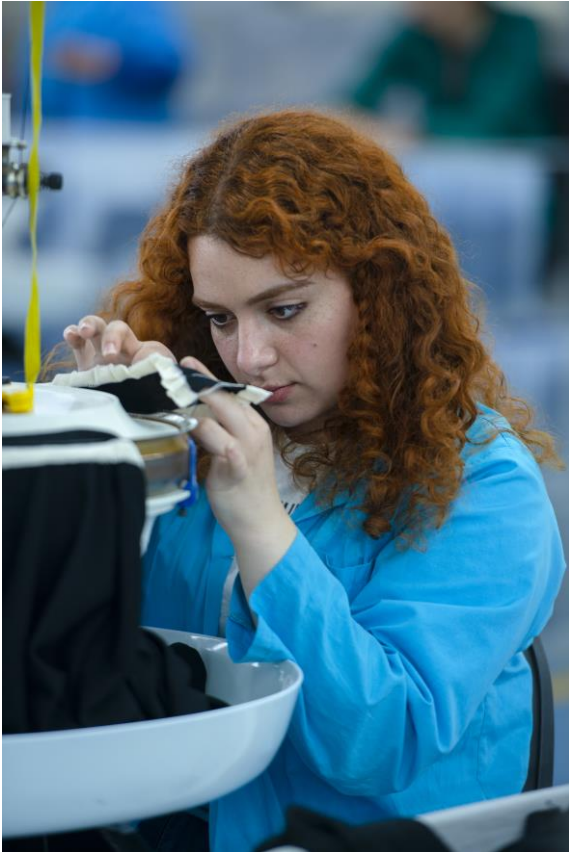




# Confection Plant



# Confection Plant



Linking

# Confection Plant



*Stitching*

# Confection Plant



*Stitching*

# Confection Plant



# Confection Plant



*Hand Craftsmanship*

# Confection Plant



*SAP Based Production Tracking System*

# Finishing Plant



*Quality Inspection*



# Finishing Plant



# Finishing Plant



# Finishing Plant



Quality Inspection

# Finishing Plant



Packaging

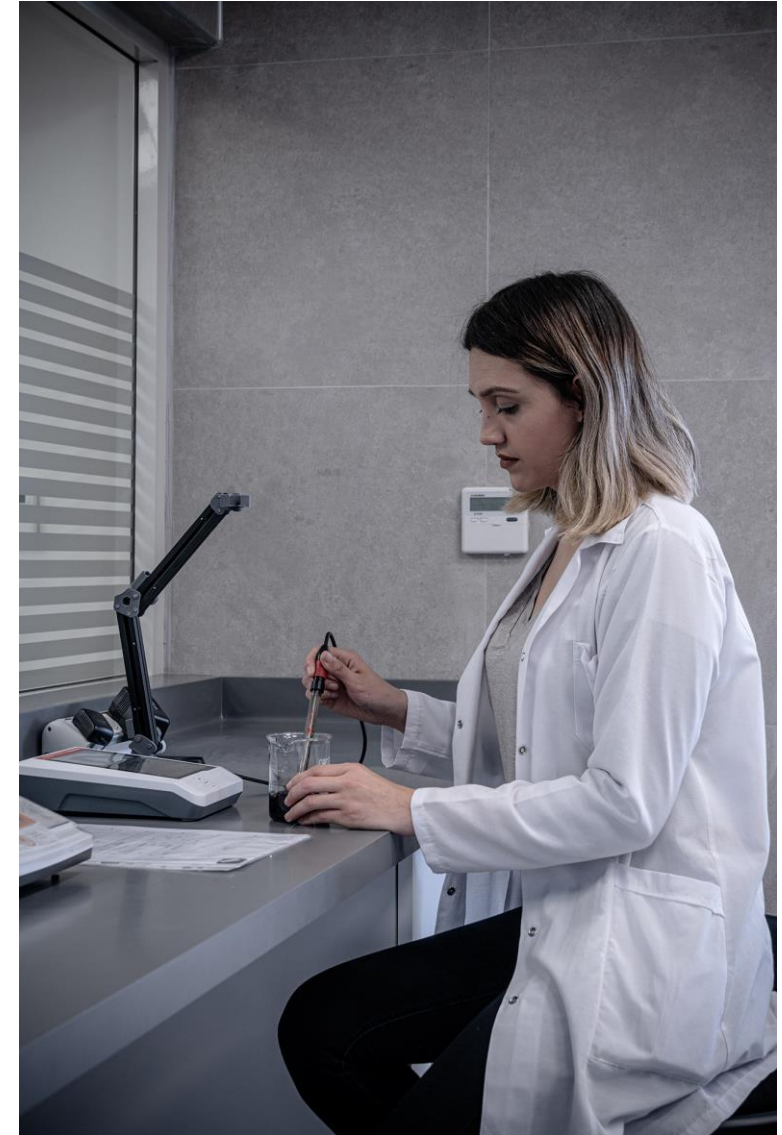
# Logistics



# ISO Quality Management System Certificates



# Laboratory









*Indoor and Outdoor Social Compound*

80% of Our Employees are Women,  
Including Machine Operators, Technicians and Line Chiefs.





## Texim Vision for Tomorrow, 2026

- >3,5 Million Pieces
- 3<sup>rd</sup> Factory in Next Generation Sustainability Structure
- >450 Knitting Machines
- >1700 Staff
- New Technologies & Services
  - digital development,
  - digital showroom,
  - renewable energy sources

THANK YOU

**ftexim**